

# SOUTHERN MISS GRAPHIC DESIGN: COMMON SUPPLIES \*NOTE: Courses will call for additional supplies.

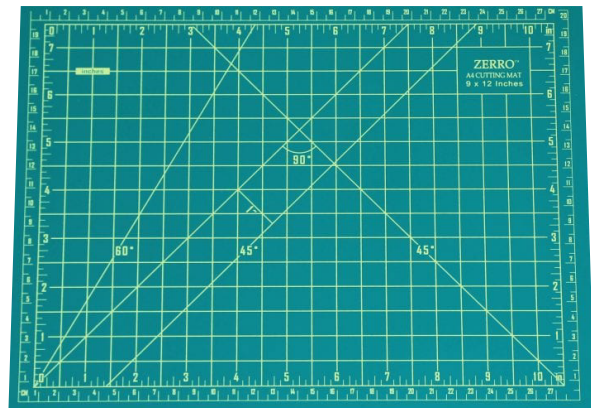
**X-Acto Knife & Blades**



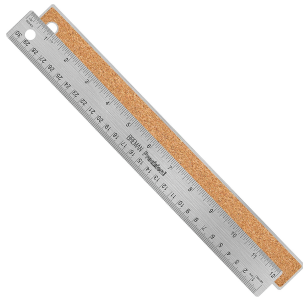
**X-Acto Knife Snapblade**



**ALVIN Two Sided Cutting Mat**



**Metal Corkback Ruler (18in or longer)**



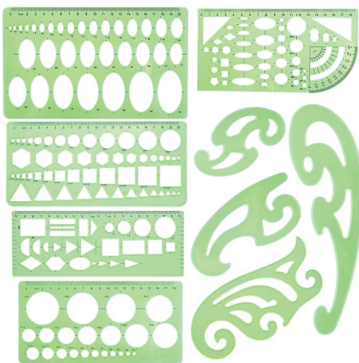
**ALVIN DRAFT/MATIC Mechanical Pencils**



**Micron Pens (assorted sizes)**



**French Curves and Form Stencils**



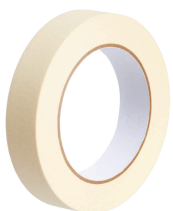
**3M Super 77 Spray Adhesive**



**Strathmore Tracing Paper (large pad)**



**Masking Tape**



**Flash Drive**



**2' Binder and Clear Sleeves**

